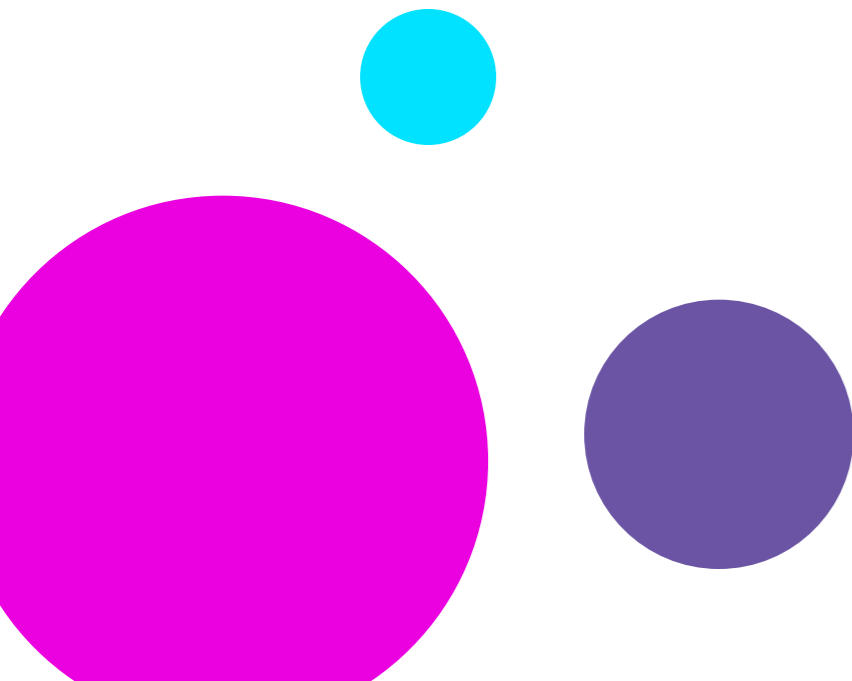
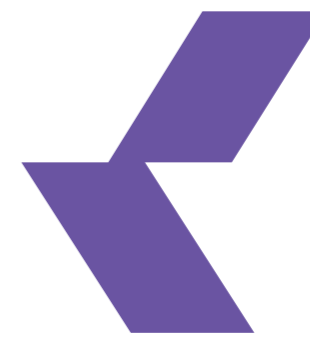




INTERNET SERVICE PROVIDER | NATIONAL INTERNET EXCHANGE

**WHEN TRUTH IS ON YOUR SIDE,  
YOU DON'T NEED **SUPPORT.****



# ● Welcome Message

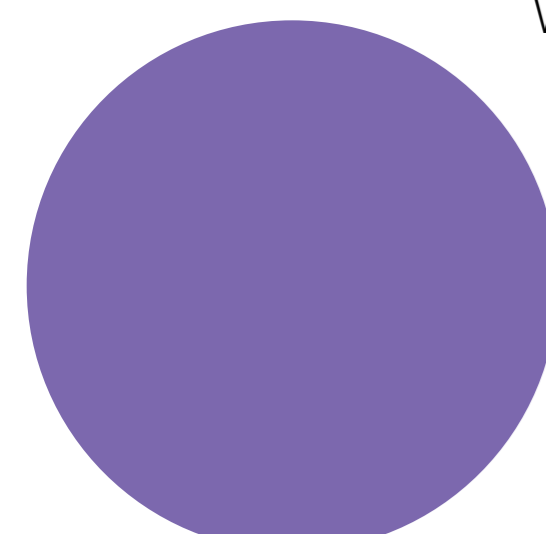
Making great things possible . . .



## How We Grew Up Fast?

We're fueled by cutting-edge tech, an unstoppable team, and lightning-fast connectivity that powers Bangladesh's digital dreams. Our affordable, reliable broadband and cloud solutions reach every corner of the nation, riding the wave of DIGITAL BANGLADESH. We don't just connect—we ignite progress!

**Anamul** Hoque  
CEO



# About Us

Launched in 2019, Kloud Technologies Limited burst onto the scene with a fiery mission: to supercharge connectivity across Bangladesh! As a top-tier Internet Service Provider (ISP) and Internet Exchange, we're all about delivering blazing-fast, rock-solid, and secure internet solutions that empower homes, businesses, and enterprises nationwide.

Our goal? To obliterate the digital divide with cutting-edge tech and electrifying customer service. With relentless innovation, we're pushing the limits to bring you lightning-speed connectivity, unmatched reliability, and a digital experience that's pure dynamite!



**KLOUD  
TECHNOLOGIES**



# Why Choose Kloud?

- **Expertise:** With years of experience in the industry, we have the knowledge and skills to deliver effective solutions tailored to your specific needs.
- **Customization:** We understand that every business is unique, and we offer customized solutions that align with your goals and objectives.
- **Reliability:** Our solutions are designed to be robust and secure, ensuring that your business can operate smoothly and efficiently.
- **Customer Support:** We pride ourselves on our exceptional customer service, providing ongoing support and guidance to our clients.




**Expert Team**  
Our team consists of industry experts with extensive experience in digital services.



**Customer-Centric Approach**  
We prioritize our clients' needs and tailor our solutions to fit their objectives.



**Innovative Solutions:**  
We stay ahead of industry trends to provide cutting-edge services.



**24/7 Support**  
Our dedicated support team is available around the clock to assist you.

# Our Services & Solutions

## DATA CONNECTIVITY

Dedicated link can be established using fiber optic or wireless radios between the state-of-the-art POPs and the gateway/router that connects customer LAN. When network ensures excellent quality, high capacity, and low latency connectivity with QoS over the entire network, the data connectivity solution is proved to be working efficiently.

## MPLS

It directs data from one network node to the next based on short path labels rather than long network addresses, avoiding complex lookups in a routing table. KLOUD's MPLS enables Enterprises and Service Providers to build next-generation intelligent networks that deliver a wide variety of advanced.

## NPLC

NPLCs offer easily available, reliable and secure connectivity to enterprises with large communication requirements. These circuits are delivered to customers on KLOUD's seamless NLD network. The data rides on aamra's point-to-point dedicated NPLC links, deployed using state-of-the-art infrastructure technology.

## IT INFRASTRUCTURE MANAGEMENT

Ensure reduced operational costs, increased operational efficiencies and a foundation for future growth. Align your IT system with business priorities, all by single source service. IT Infrastructure Management concept has been extended much beyond and before the procurement function and simply means.

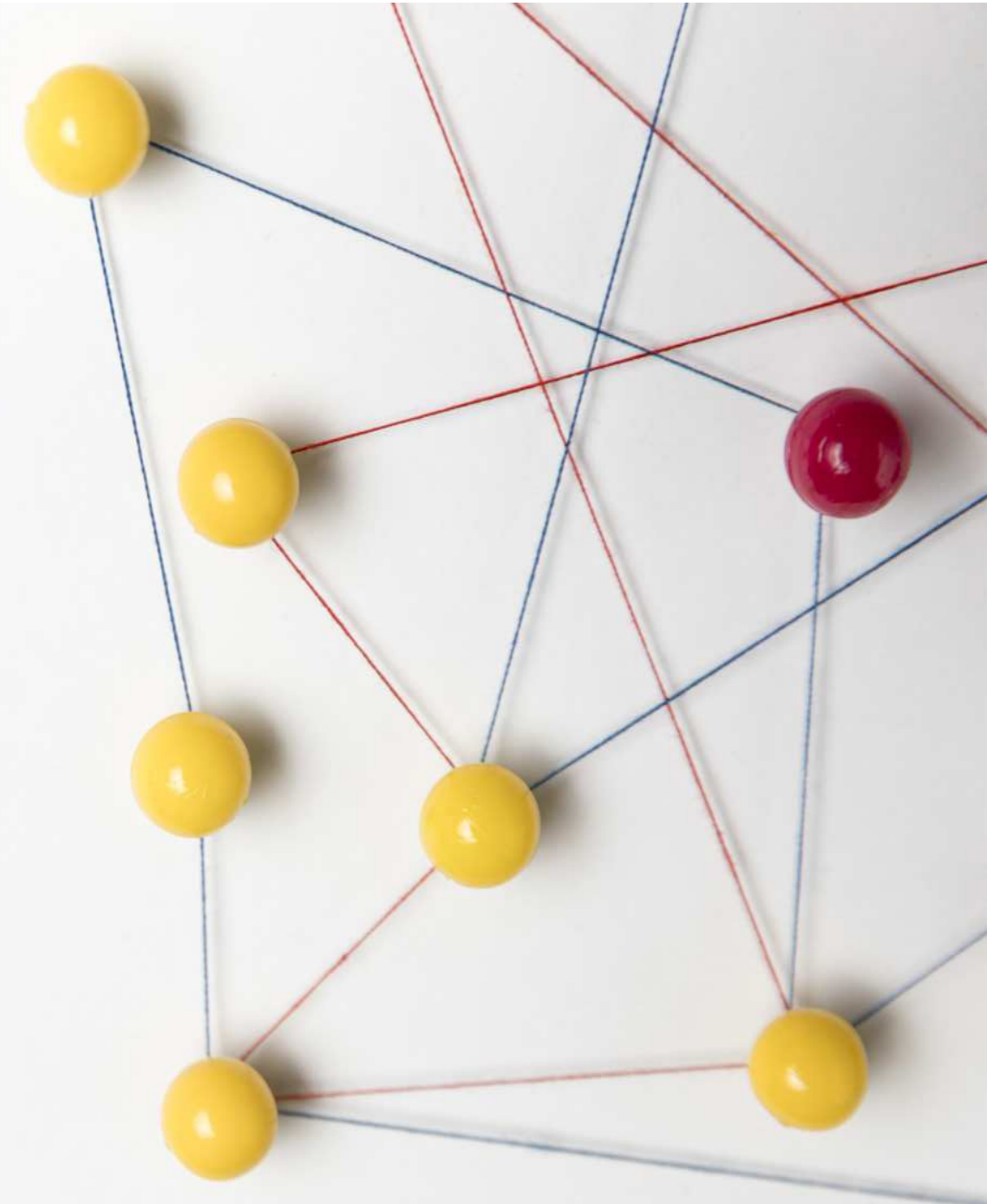
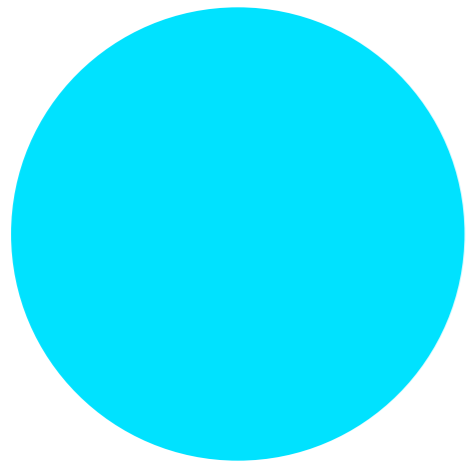
## IPLC & IPVPN

These point-to-point private line services are dedicated to the customer's exclusive use providing quality reliable digital transmission seamlessly integrating data, voice and imaging services. aamra in partnership with Telekom Malaysia (TM), offers a range of IPLC services through TM's extensive international network infrastructure covering all the continents.

# What we offer?

Apart from ISP & NIX services, KLOUD aims at providing solutions to complex projects through systems integration, which includes planning, design, implementation, and management. Solution service resolves the specific need of our customers through the appropriate and pragmatic use of IT.

- IT Services & Solutions
- Security [Online & Offline]
- Cloud
- Workplace Support



# IT Services & Solutions

## AUTOMATION

Industry 4.0, is long gone across our business enterprises. And Automation has taken it gradual logical step towards AI. We help business houses to through that design step by step integration method, with correct tools, platform to move forward.

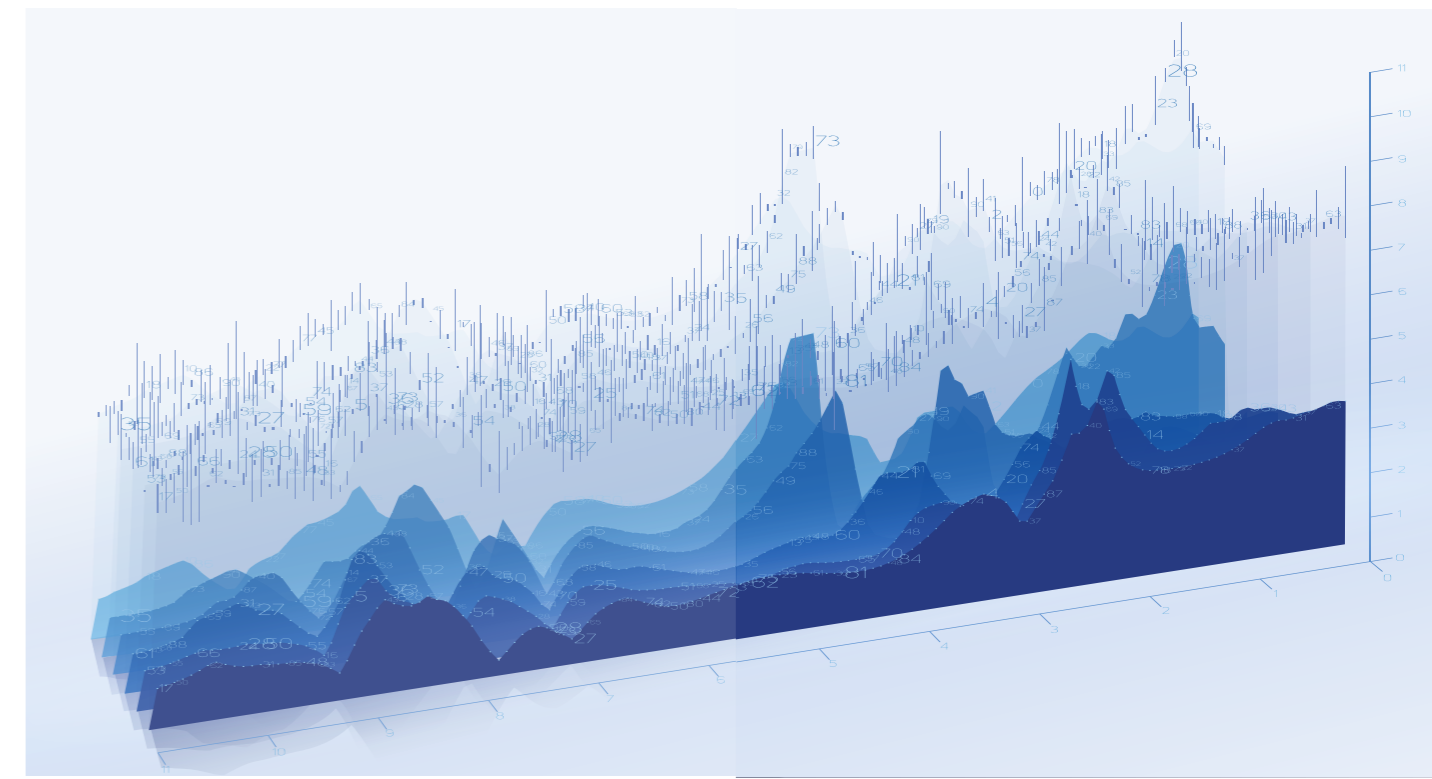
Selection of networking logic, IoT device knowledge, selection of software platform, choosing best connectivity etc etc are the few issues that needs to be aggregated to clients core need and financial strength. KLOUD knows how to cut the coat according to cloth and beyond. We are not stopping until we understand the core methodology of our customers business, and it's pain/pressure points. Finally working to reduce it efficiently.

There is an almost hidden demand for retail automation. In this regard, **Home Automation**, is fast taking shape, with the advent of various IoT devices and Apps. But these all are stand-alone systems. KLOUD provide integrated home automation solution, which is agnostic to any hardware, and scalable to any platform. Not stopping there this system can be augmented to large building management or factory automation, namely BMS & SCADA.

- Automation
- Reporting Analytics
- Software Development
- AI Solutions

## REPORTING ANALYTICS

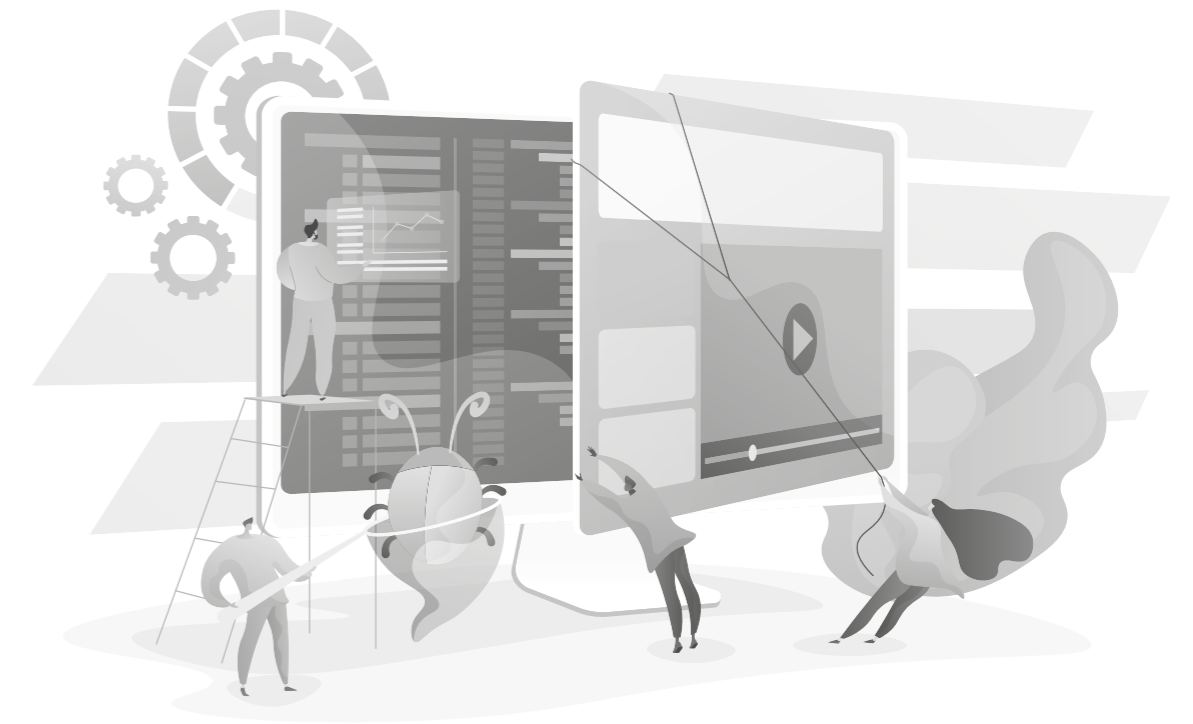
Kloud's Reporting Analytics provides a data management and governance strategy that delivers greater visibility to decision makers regarding the critical KPIs for your business, and visualization tools to better manage and monitor your key business processes.



## SOFTWARE DEVELOPMENT

In case of customized software development KLOUD'S has a pool of experienced developers, in almost every major Coding Language & platforms; starting from C++ to Python, Laravel to Django.

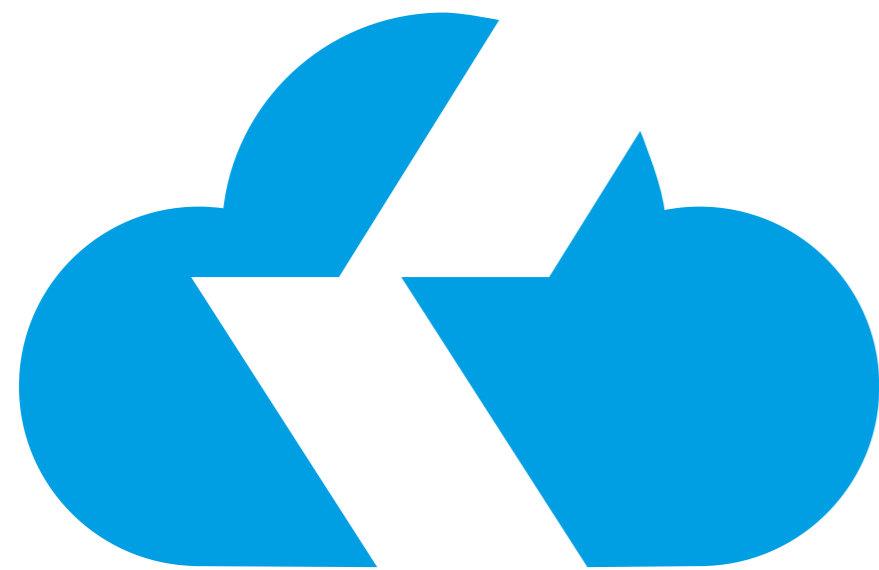
KLOUD'S takes pride in their in-depth knowledge of industry specific turn-key softwares. It also has vast pragmatic approach in case of using OPEN SOURCE SOFTWARE, according to customer demand. Our team can suggest and customize the open source software, as the customer envisions.



# IT Services & Solutions

## AI SOLUTIONS

Our state-of-the-art AI solutions transform businesses by harnessing the power of advanced machine learning, predictive analytics, and automation. We provide customized, scalable tools designed to optimize workflows, uncover actionable insights, and enhance customer experiences. From intelligent data processing to real-time decision support, our innovative AI technologies empower your organization to stay competitive, agile, and future-ready in an ever-evolving digital world.



## PERIMETER SECURITY

KLOUD's Perimeter Security solution is strongly aligned with its objective of minimizing business risk, while ensuring maximum operational continuity as the first barrier against network threats. It achieves this by integrating hardware, software and services that specialize in real time protection and detection, and it is seamlessly integrated with the risk management services provided by our SOC.

Our services in this area include security solutions to prevent information theft, including firewalls and IDS (Intrusion Detection Systems), through designing and implementing security infrastructure that safeguards information and ensures that servers and applications are logically protected.

## SOC - SECURITY OPERATION CENTER

Integrated IT security solution, which ensures that your IT assets and resources are constantly monitored and secure. KLOUD's Security Operations Center (SOC) is a 24/7 security service for any corporate IT infrastructure that protects the organization from incidents that could affect business continuity.

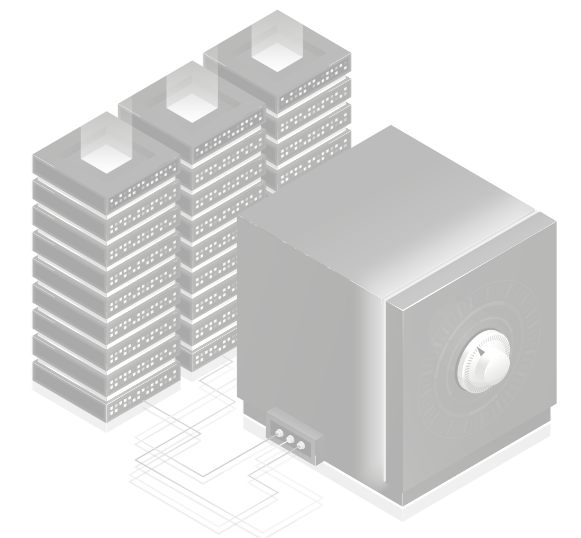
Its specialists define processes using appropriate methodologies and technologies to prevent and respond correctly to any threat that might imply a security incident.

# Security - Online & Offline

## CENTER FOR INTERNET SECURITY

Provides a clear, accurate, and efficient road-map to support the management of your organization's cybersecurity.

KLOUD's CIS Consultancy Services help companies to measure their cyber-security maturity based on CIS controls (Center for Internet Security). These are several best practices devised by cyber-security experts, which have proven to be effective in defending all organizations.



# CLOUD CLOUD

Flexible and secure technology to continue growing: World-class flexibility, security and operating processes that address the challenges arising from Digital Transformation.

KLOUD's cloud computing services provide our customers with computing environments that are secure, reliable, flexible and contain redundancy. We provide integrated hybrid and public enterprise cloud solutions and services using data-centers and computing infrastructure certified as complying with the highest standards in the world, such as Tier III and Tier IV.

Our broad portfolio of solutions and services are the ideal choice for organizations facing challenges such as an explosive increase in demand, seasonal business cycles, or optimal resource use, etc. Furthermore, we provide computing infrastructure that is web-based and scalable, so our customers can quickly and efficiently deploy their applications, in accordance with their requirements.

## CLOUD ADOPTION ASSESSMENT

Explore the most cost-effective, secure and efficient strategy to take advantage of the enormous benefits of the cloud.

Our Cloud Adoption Consultancy service consists of identifying organizational maturity with respect to cloud technologies, and establishes a road-map or action plan to help our customers to advance in the adoption, migration and operation of Cloud solutions.

## MIGRATION SERVICE

Securely and efficiently migrate to the Cloud, to safeguard the operational continuity of your business.

Our migration service focuses on advising and supporting our customers while they transform their services and applications to hybrid cloud environments. We take advantage of the best alternatives, services and optimizations available in the cloud today.





[www.kloud.com](http://www.kloud.com) | [www.kloudnix.com](http://www.kloudnix.com)

*Lets discuss*



**KLOUD  
TECHNOLOGIES**

Phone: +8809649161216; +8801711402423

Shanta Western Tower, Suit# 904, Level 9, 186 Bir Uttam Mir Sawkat Road, Tejgaon I/A, Dhaka-1208, Bangladesh.

[contact@kloud.com.bd](mailto:contact@kloud.com.bd) | [kloudnix.com](http://kloudnix.com) | [kloud.com.bd](http://kloud.com.bd)